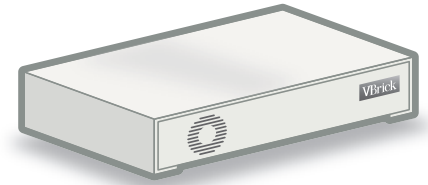




Industry leading networked video appliances

The VBrick MPEG SSM product family offers encoding solutions ideal for security and surveillance monitoring applications where high quality and bandwidth-efficient real-time video is required. VBrick offers solutions in MPEG-2 and MPEG-4 video formats, in rugged compact appliances for harsh environmental conditions.



Capabilities

VBrick's VBSSM Appliances are based on the award winning VB6000 platform, with a conformally coated, ruggedized package

Encoding – Digitizing and compressing a video signal for delivery over an IP Network

Serving – Serve up to 200 simultaneous unicast video streams (MPEG-4 only)

Multicasting – Multicast live video directly from the appliance

Remote Management – Complete remote configuration and management solution via SNMP, or enable automated configuration download via periodic configuration polling

Dual Serial Ports – For in-line camera control and management

Format Flexibility – VBrick MPEG Appliances support NTSC and PAL video, 4:3 and 16:9 aspect ratios, a wide range of video resolutions, frame rates, and bit rates – including the ability to meter the output of the stream to fit the bandwidth constraints of any network

Benefits

- Robust, reliable, appliance minimizes downtime and IT support requirements
- Conformally coated circuit boards
- Automatic device discovery and configuration
- Low end-to-end latency
- Industry standard video formats
- Streams to publishing points via HTTP push, enabling firewall tunneling (MPEG-4)
- Format flexibility enables portability and adaptability to any network requirement
- Optional text insertion

Models

MPEG-2

9170-4200 Single Channel SSM Encoder (video only)

MPEG-4

9174-4200 Single channel SSM Encoder (video only)

Compatibility

- Multiplayer compatible - Windows Media®, VBrick StreamPlayer, Real, and QuickTime®
- ISMA-MPEG-4 part 2 compliant
- IPv6 (MPEG-2 to Streamplayer)
- IGMP v3
- SNMP v3
- Sntp

Interoperability

- EtherneTV Suite - Portal Server, Scheduler, and Network Video Recorder
- EtherneTV IPR - low cost video decoding
- VBrick VOD-W MPEG Video On-Demand Server
- Streamplayer software for desktop video decoding

	VBSSM MPEG-2 Appliance	VBSSM MPEG-4 Appliance
Video Encoder	MPEG-2 ISO / 13818-1, -2, -3 Main level, Main profile 4:2:0, SP@ML and MP@ML Adjustable intrapicture and reference distance (GOP)	MPEG-4 - ISO / IEC 14496-2:1999 (simple profile)
Format-Input	NTSC, PAL (PAL-M) - Composite video	NTSC, PAL (PAL-M) - Composite video
NTSC Resolutions	Full D1: 720x480, 2/3 D1: 480x480, 1/2 D1: 352x480, 352x240 (SIF)	352x240 (SIF), 320x240, 256x192, 192x144, 176x128 (QSIF), 128x96, 64x48
PAL Resolutions	Full D1: 720x576, 2/3 D1: 480x576, 1/2 D1: 352x576, 352x288 (SIF)	384x288, 352x288 (CIF), 320x240, 256x192, 192x144, 176x144 (QCIF), 128x96, 64x48
Encoding Rates	1 Mbps to 15 Mbps	8 kbps - 2 Mbps
Compliant Levels	N/A	Level 1 up to 64 Mbps Level 2 up to 128 Mbps Level 3 up to 384 Mbps
Frame Rates	NTSC 29.97 fps, 525 lines PAL 25 fps, 625 lines	1 fps to 30 fps, user configurable
Bit Rate/Frame Rate	Constant / Constant	Constant / Constant Variable / Constant Constant / Variable
PID Selection	Adjustable	N/A
Key Frame Interval	Programmable GOP	User defined, 0-30
JPEG Image Capture	N/A	Capture JPEG images every 1 to 600 seconds
Maintenance Port	Serial port for local maintenance or data transport - RS232/422/485	Serial port for local maintenance or data transport - RS232/422/485
Control Port	RS 232 / 422 / 485 serial port for data transport	RS 232 / 422 / 485 serial port for data transport
Dimensions	Width: 8.6" (22 cm) Height: 1.7" (4.3 cm); Dual model is 2.38" (6 cm) Depth: 12.25" (31 cm)	Width: 8.6" (22 cm) Height: 1.7" (4.3 cm); Dual model is 2.38" (6 cm) Depth: 12.25" (31 cm)
Weight	Approximately 3 lbs (1.36 kg) Dual model is approximately 5 lbs (2.27 kg)	Approximately 3 lbs (1.36 kg) Dual model is approximately 5 lbs (2.27 kg)
Power Requirements	+10 to +27.5 VDC (18 Watts); Dual model is 29 Watts	+10 to +27.5 VDC (24 Watts); Dual model is 29 Watts
Power Supply Input	100 to 240 VAC, 50/60 Hz, approx. 55 Watts	100 to 240 VAC, 50/60 Hz, approx. 55 Watts
Power Supply Output	+24V up to 3.0 A	+24V up to 3.0 A
Regulatory	FCC Part 15, UL, CE	FCC Part 15, UL, CE
Relay	Dry contact, 75mOhms 2 A @ 30 VDC, 0.3 A @ 110 VDC, 0.5 A @ 125 VDC	Dry contact, 75mOhms 2 A @ 30 VDC, 0.3 A @ 110 VDC, 0.5 A @ 125 VDC
LED Status	Power In (24VDC) multi-color activity LED (Ethernet, COM1, COM2)	Power In (24VDC) multi-color activity LED (Ethernet, COM1, COM2)
Ethernet Network	10/100 Mbps ethernet via RJ-45, Static or DHCP, Auto sense full/half duplex	10/100 Mbps ethernet via RJ-45, Static or DHCP, Auto sense full/half duplex
Protocols	Unicast/Multicast, DiffServ (QoS), UDP / IP / RTP / FTP / RIP 1, RIP 2 Routing	Unicast/Multicast, DiffServ (QoS), UDP / IP / RTP / RTSP / RTCP / HTTP / FTP
Temperature Range	-34° to +74° Celsius, Operating humidity up to 95% non-condensing*	-34° to +74° Celsius, Operating humidity up to 95% non-condensing*

*High temperature operation has some dependencies. Please contact VBrick.



Windows Media® is a registered trademark of Microsoft Corporation in the United States and/or other countries. ©2008 VBrick Systems, Inc.