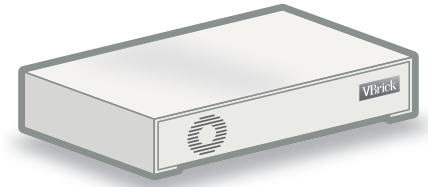




### Industry leading networked video appliances

The VBrick SSM product family offers video only encoder solutions ideal for security and surveillance monitoring applications where high quality and bandwidth efficient video is required. VBrick now offers solutions using Windows Media® video formats, in rugged compact appliances for harsh environmental conditions.



### Capabilities

VBrick's VBSSM Appliances are based on the award winning VB6000 platform, with a conformally coated, ruggedized package

**Encoding** – Digitizing and compressing a video signal for delivery over an IP Network

**Serving** – Serve up to 200 simultaneous unicast video streams

**Multicasting** – Multicast live video directly from the appliance

**Pushing** – Push up to 25 simultaneous streams to VBrick Reflectors or to Windows Media® Servers

**Low Delay Windows Media® Video** – When combined with VBrick's Low Delay Windows Media® Technology, the VBSSM-WM can enable real-time video applications such as camera control and security monitoring typically reserved for MPEG formats

**Remote Management** – Complete remote configuration and management solution via SNMP, or enable automated configuration download via periodic configuration polling

**Dual Serial Ports** – For in-line camera control

**Format Flexibility** – VBrick appliances support NTSC and PAL video, 4:3 and 16:9 aspect ratios, a wide range of video resolutions, frame rates, and bit rates, including the ability to meter the output of the stream to fit the unique streaming requirements of any network

### Models

#### Windows Media®

**9176-4200** Single channel SSM Encoder (video only) - NEW

#### Compatibility

- Standard Player Compatibility – Windows Media®
- Microsoft Silverlight Player - NEW!
- IGMP v3
- SNMP v3
- VBrick Low Delay Windows Media® Technology

#### Interoperability

- EtherneTV Suite – Portal Server, Scheduler, and Network Video Recorder
- EtherneTV WM IPR – low cost video decoding
- VBrick VOD-WM Video On-Demand Server

### Benefits

- Robust, reliable, appliance minimizes downtime and IT support requirements
- Conformally coated circuit boards
- Automatic device discovery and configuration
- Low video transmission delay
- Industry standard video formats
- Streams to publishing points via HTTP push, enabling firewall tunneling
- Format flexibility enables portability and adaptability to any network requirement

**VBSSM WM Appliance**

Video Encoder	WM9 Encoding, SMPTE VC-1 compliant
Format-Input	NTSC, PAL - Composite video
4:3 Resolutions	640 x 480, 640 x 240, 320 x 480, 512 x 384, 400 x 300, 320 x 240, 240 x 180, 160 x 120
16:9 Resolutions	640 x 360, 640 x 180, 512 x 288 (PAL only), 384 x 216 (NTSC only), 256 x 144, 128 x 72
Encoding Rates	20 kbps - 4 Mbps
Closed Caption	Line 21 passthrough or user inserted
Frame Rates	1, 7.5, 10, 15, 30 fps (NTSC) 1, 5, 10, 12.5, 25 (PAL)
Bit Rate/Frame Rate	Constant/Constant Constant/Variable
Key Frame Interval	User defined
JPEG Image Capture	Capture JPEG images every 1 to 600 seconds
Push	Up to 25 concurrent HTTP pushes to VBrick Appliances or Windows Media® Servers
Server	Live multicast server Live streaming server - up to 200 concurrent live streams
Maintenance Port	Serial port for local maintenance or data transport RS232/422/485
Control Port	Serial port for data transport RS232/422/485
Dimensions	Width: 8.7" (22 cm) Height: 1.77" (4.5 cm) Depth: 12.3" (31.2 cm)
Weight	Approximately 3 lbs (1.32 kg)
Power Requirements	+10 to +27.5 VDC (24 Watts)
Power Supply Input	100 to 240 VAC, 50/60 Hz, approx. 55 Watts
Power Supply Output	+24V up to 3.0A
Regulatory	FCC Part 15, UL, CE
Relay	Dry contact, 75mOhms, 2A @ 30VDC, .3A @ 110VDC, .5A @ 125VDC
LED Status	Power in (24VDC), Activity, Link, 10/100
Ethernet Network	10/100 Mbps ethernet via RJ-45, Static or DHCP, Auto sense full/half duplex
Protocols	Unicast/Multicast, DiffServ (QoS), UDP / IP / RTP
Temperature Range	-34° to +74° Celsius, Operating humidity up to 95% non-condensing*

\*High temperature operation has some dependencies. Please contact VBrick.

